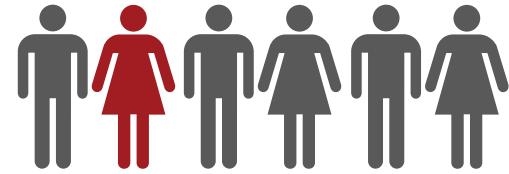
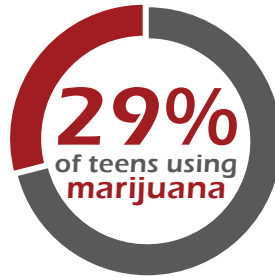


Teens & Marijuana



Addictive 
1 in 6 TEENS

who use marijuana become addicted



also report using other drugs such as **heroin, cocaine, & meth**

Marijuana is the **#2 drug** abused by Arizona **teens**



More Arizona teens use **Marijuana** than tobacco



Regular use of **marijuana** by teens can lead to an

IQ DROP 
of up to **8 POINTS**



Youth who use **marijuana** daily are 60% **LESS LIKELY to graduate**

Visit www.DrugFreeAZKids.org/Marijuana for more details.

Marijuana & Your Health

Brain

Impaired short-term **memory**

Anxiety & **paranoia**

Panic attacks

Lack of **coordination**

Lungs

Increased risk of **infections**

Excess phlegm

Wheezing & **chronic cough**

Bronchitis

Heart

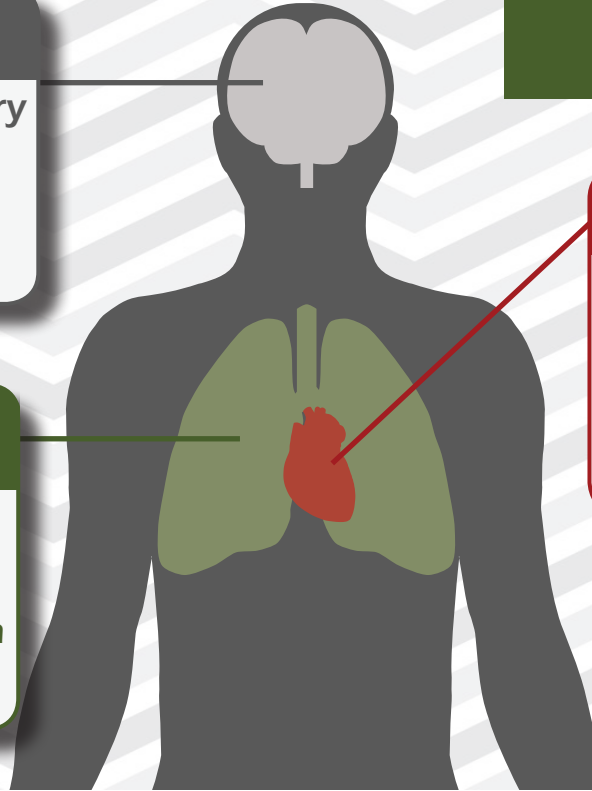
Higher risk of heart **attacks**

Irregular heart beat

Increased **blood pressure**

Blood vessel **constriction**

Chest **pain**



DRUGFREEAZKIDS.org

A Program of Southwest Behavioral & Health Services

